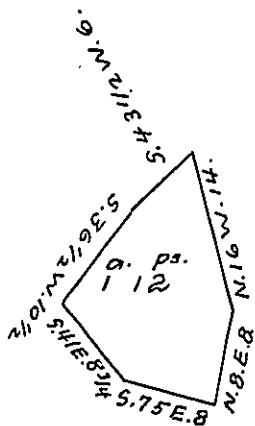


York County Shore.



Lancaster County Shore.

A Draught of "Stoney Island" situate in the river Susquehanna in Manor Township Lancaster County opposite lands of the Heirs of Philip Lowers, Decd on the east side and opposite to lands of John Musser, D. d, on the west side and within from one to three hundred yards from the Lancaster shore Containing One Acre & twelve perches strict Measure surveyed in pursuance of a Warrant dated the twenty ninth day of July A. D. 1814. Granted to Samuel Sherk

John Reist, D.S.

To Jacob Spangler, Esq,  
Surveyor General.

IN TESTIMONY that the above is a copy of the original remaining on file in the Department of Internal Affairs of Pennsylvania, made conformably to an Act of Assembly approved the 16th day of February, 1833, I have hereunto set my Hand and caused the Seal of said Department to be affixed at Harrisburg, this eighth day of March, 1907.

*Isaac P. Brown*  
Secretary of Internal Affairs.